

# Air Temperature and Humidity Sensor

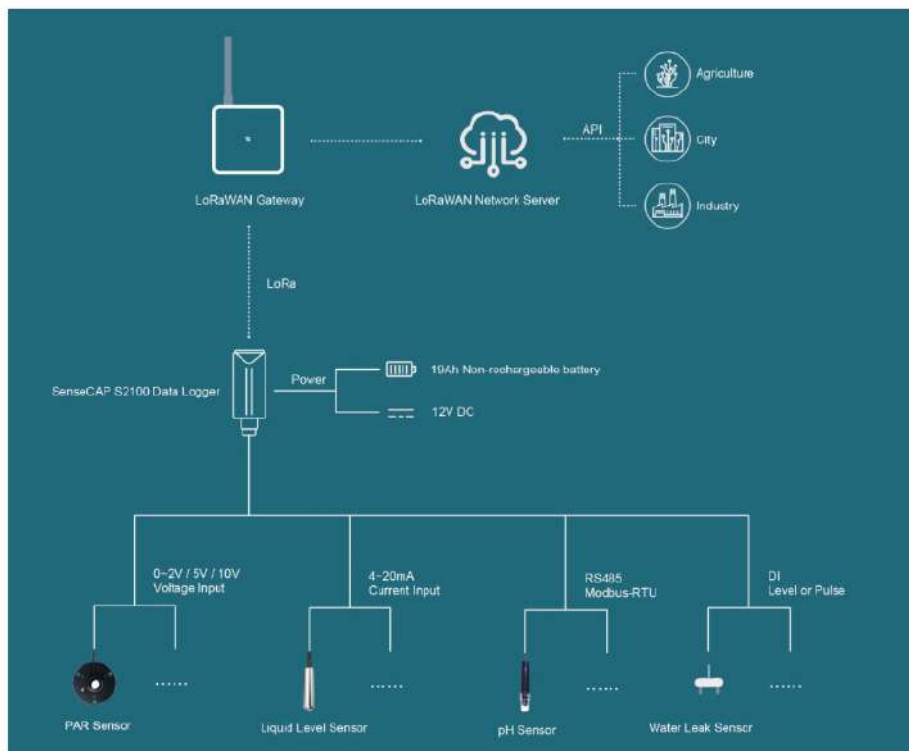
SenseCAP LoRaWAN® Data Logger



## Overview

This air temperature and humidity sensor contains an algorithm to achieve an extremely high accuracy data collection process. Also, the high-level tolerance for working conditions and low cost of power provide a solution with long working expectations and saving of human resources.

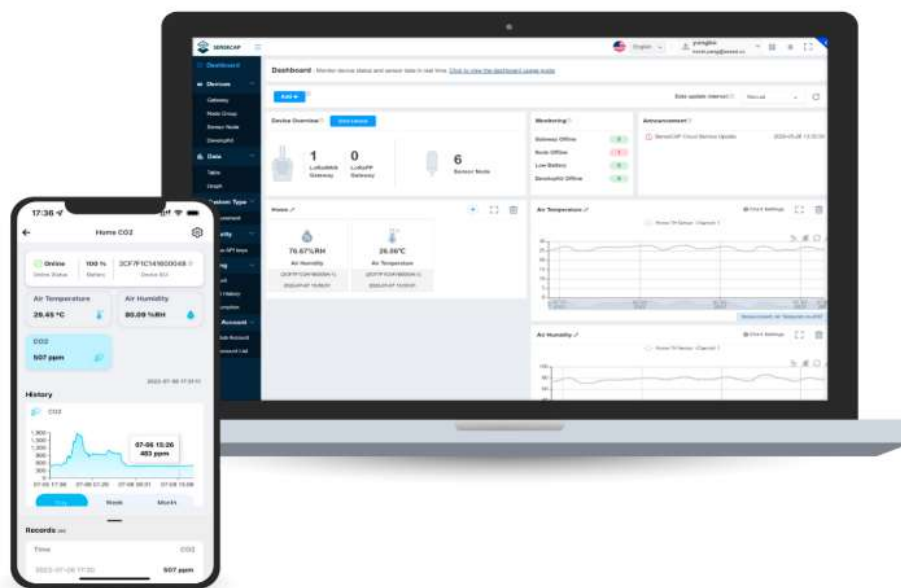
## Recommendation for S2100 Data Logger



SenseCAP S2100 Data Logger can connect to MODBUS RS485/Analog/GPIO industrial sensors including the Seeed Grove Sensors and transmit data from sensors to the LoRaWAN network. Benefiting from its high robustness and waterproof and dustproof enclosure, the S2100 data logger can work under harsh environments such as high UV exposure, heavy rain, dusty conditions, etc. which is ideal for outdoor use. Based on LoRaWAN, it can cover a long transmission range of 2km in urban scenes and 10km in line-of-sight while keeping lower power consumption. Equipped with built-in Bluetooth and app service for OTA configuration and remote management, it enables quick setup and update. It can be battery-powered or connected to a 12V external power supply. When the 12V power supply is connected, the replaceable built-in battery is set to be used as the backup power supply

“Apart from working with existing sensor nodes, the S2100 data-logger can also be connected with SenseCAP S2110 Grove Converter to achieve a plug-and-play outdoor LoRaWAN sensor deployment experience with various selections of Grove Sensors. It is an ideal solution for developing, fast prototyping, and small deployment for DIY Industrial level LoRaWAN Sensors. Moreover, you can use your existing Seed Grove Sensors to build your outdoor LoRaWAN sensors without coding. You should try out with this kit.”.

**Seed provides the SenseCAP Portal and SenseCAP Mate to help users better manage and check data remotely**



Configuration and Remote Monitoring

## Features

- High Performance: High accuracy, fast response, and stability
- Temperature Measurement Range: Can be used in -40~80

## Application

- Smart City
- Smart Agriculture
- Environmental Monitoring
- Other Sensor Applications



## Specification

Signal Output	RS485 Modbus Protocol
Power supply	3.6-30V/DC
Current Consumption	4mA@24V DC
Humidity Measurement Range	0-100%RH, Resolution 0.01% Accuracy: $\pm 3\%$ RH
Temperature Measurement Range	-40~80 °C , Resolution: 0.01 °C , Accuracy $\pm 0.3^{\circ}\text{C}$
IP Rating	IP54
Operating Temperature	-40~85°C
Installation Methods	Wall-mounted Installation and Tube installation
Cable Length	2M
Connection Methods	Aviation connector and Hook-up wire

## Part List

	Equipment	Number
1	Tube Installation Equipment	1
2	Wall-mounted Installation Equipment	1
3	Plastic Screw	2
4	Metal Screw	2



## ECCN/HTS

HSCODE	9025800090
USHSCODE	9026104000
UPC	
EUHSCODE	9013101000
COO	CHINA
RoHS	1

